

HEAVY-DUTY REPAIRABLE STAINLESS GAUGE

PRESSURE GAUGES

REOTEMP's Series PR gauge offers rugged, all-welded stainless steel construction ideal for heavy-duty industrial applications. The stainless steel case, tube and socket are welded together for superior case sealing and gauge integrity. The twist-off bayonet ring offers easy access for field repair and calibration services. Liquid filling (at the factory or in the field) is recommended for applications involving vibration. For high-corrosive, high-temp, or severe service applications, a diaphragm seal is recommended.



PR40

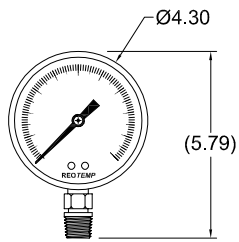


PR60

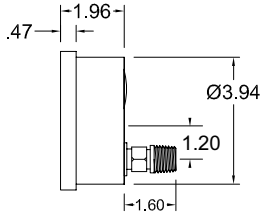
- 
Fillable
- 
Dials
- 
Accuracy
- 
Custom Logo
- 
Diaphragm Seal
Compatible

FEATURES / BENEFITS

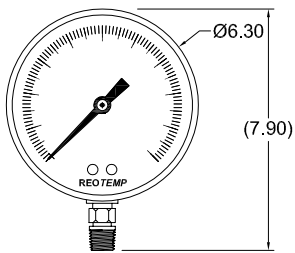
- All-Welded Stainless Steel Construction
- Removable Bayonet Ring, Micro Adjustable Pointer
- Field Fillable Case, NEMA 4X/IP65
- Internal Overload and Underload Stops, Floating Zero
- Safety Blow-Out Relief



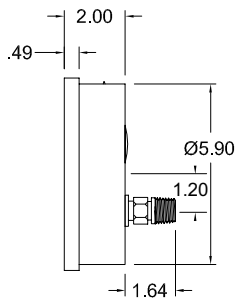
PR40



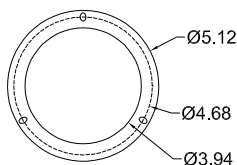
*dimensions in inches



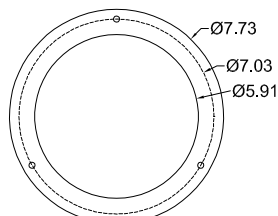
PR60



*dimensions in inches



PR40 Mounting Flange



PR60 Mounting Flange

SPECIFICATIONS

Accuracy	1%, ASME Grade 1A (10K to 20K ; 2% Upscale, 4% Downscale)
Ambient Limits	-40°F/150°F
Process Limits	-40°F/250°F
Process Limits with Diaphragm Seal	-60°F/400°F (Direct Mount)* -110°F/750°F (Remote Mount or Cooling Tower)* *Exact limits depend on diaphragm seal and fill fluids.
Wetted Materials	Tube: 316SS Seamless Socket: 316SS
Lens	Tempered Safety Glass , Plastic or Laminated Safety Glass
Other Materials	Case: 304SS Ring: 304SS Twist-Off Bayonet Dial: White Aluminum with Black Letters Case-Socket: Welded
Fillable	Yes
Restrictor Screw	Yes, removable.
Maximum Working Pressure	Stable = 100% Momentary = 130% of scale
Environmental Protection	NEMA 4X/IP65
Weight	4" = 1.3 lbs (2.0 lbs filled), 6" = 2.1 lbs (4.2 lbs filled)

HEAVY-DUTY REPAIRABLE STAINLESS GAUGE



Visit reotemp.com

- ✓ Check Stock
- ✓ Get Price
- ✓ Configure Part #
- ✓ Download PDF Data Sheets

HOW TO ORDER: Choose options to build a part number. For example: **PR40S1A4P01-D-T-HV**

PR40	S	1	A	4	P01	-D	-T	-HV
DIAL SIZE	CASE TYPE	TUBE & SOCKET	MOUNT TYPE	CONNECTION	RANGE CODE	CASE FILL	LENS	OPTIONS
PR40 = 4" PR60 = 6"	S = 304SS *T = 316SS	1 = 316SS *3 = Monel	A = Bottom B = Bottom/Rear Flange C = Lower Back D = Lower Back "U" Clamp E = Lower Back/Front Flange F = Lower Back/Rear Flange	4 = 1/4" NPT 2 = 1/2" NPT 5 = 1/4" Female High Pressure (9/16" - 18 UNF)	Common Ranges P01 = -30 inHg-0 psi P03 = -30 inHg-0-30 psi P16 = 0-30 psi P18 = 0-100 psi P20 = 0-200 psi P21 = 0-300 psi P25 = 0-1,000 psi P34 = 0-5,000 psi Available Ranges ■ Vac to 20,000 psi ■ Gauge Pressure, Vacuum, or Compound ■ Lowest Range = 10 psi Available Units: ■ psi (std) ■ bar ■ kPa ■ kg/cm ² ■ ft H ₂ O ■ & more <i>For Additional Range Codes See Page 45</i>	-D = Dry -G = Glycerin -S = Silicone -W = Glycerin/Water (65/35) -I = Inert	-T = Tempered Safety Glass (std) -P = Plastic -S = Laminated Safety Glass	-HV = Hi-Vis™ Dial -C3 = 3 pt. Calibration Certificate -OX = Cleaned for O ₂ Service -TS = Stainless Steel Tag -MP = Max. Pointer -EC = Electrical Contacts (4" Case Only) -P6 = Pointer Stop at 6 O'clock -R2 = .5% Full Scale Accuracy -NC = NACE Compliance Certificate -PM = Positive Material Identification Certification

Diaphragm Seal Suitability Guide

*Non-standard Configuration

For applications where a diaphragm seal is required, the following diaphragm seal model types are most commonly assembled and filled to Series PR40/60 pressure gauges. This matrix identifies which diaphragm seal is appropriate based on the specified pressure range. Please reference the diaphragm seal data sheet and seal fill fluid guide for additional application considerations including max pressure, temperature limits, and material compatibility.

Diaphragm Seal Model	Total Gauge Span* (in psi)							
	15	30	45	60	75	100	160+	
Mini Seals	MS6	X	S	T	T	T		
	MS8	T	T	T				
Threaded Flush	1"	X	X	X	S	T	T	
	1.5"	T	T	T	T			
Offline	W5	S	T	T				
	W6	T						
	W7/T5/V5							
Sanitary	1.5" TC	X	X	X	T	T	T	
	2" TC	S	T	T				

*Total gauge span is additive of negative and positive pressures.

Example: -15 - 0 - 30 psi = 45 psi span

Assembly will function correctly with minimal accuracy degradation.

Assembly will function correctly given stable temperature.

Assembly is highly sensitive to orientation and temperature variance. REOTEMP cannot guarantee a stated accuracy.

Assembly will not work. The diaphragm does not displace enough fill fluid to drive the pressure gauge.