

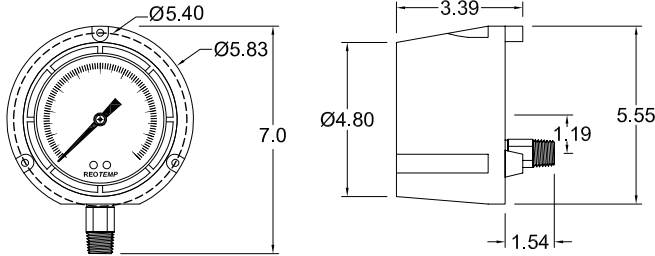
## 4.5" INDUSTRIAL PROCESS GAUGE

PRESSURE GAUGES

REOTEMP's Series PT45 process gauge is designed to withstand corrosive atmospheres and media, pulsation and vibration; a very rugged gauge engineered for the process industries. The solid front and blowout back provides a high degree of user safety. *Note: For highly-corrosive, high-temperature, or severe service applications a diaphragm seal is recommended.*



**PT45P**

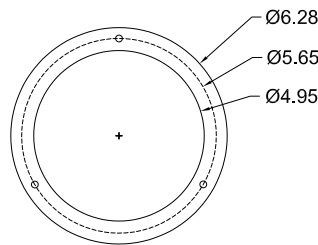


**PT45P**

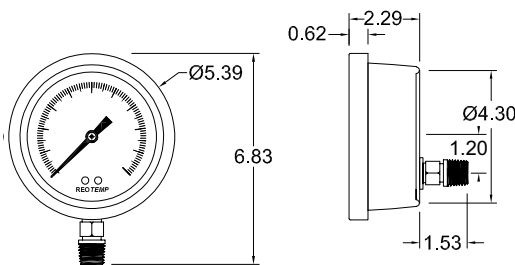
\*dimensions in inches



**PT45T**








**PT45T Mounting Flange**



**PT45T**

\*dimensions in inches

-   
Fillable
-   
Dials
-   
Accuracy
-   
Custom Logo
-   
Diaphragm Seal Compatible

### FEATURES / BENEFITS

- Safety Pattern Design
- Solid Front/Blowout Back Safety Case
- All Stainless Steel Internal Parts
- Internal Overload and Underload Stops
- Field Fillable Case
- Micro-Adjustable Pointer with Floating Zero



### SPECIFICATIONS

<b>Accuracy</b>	±0.5%, Grade 2A (10k - 20k psi = 1% upscale, 2% downscale)
<b>Ambient Limits</b>	-40°F/150°F
<b>Process Limits</b>	-40°F/250°F
<b>Process Limits with Diaphragm Seal</b>	-60°F/400°F (Direct Mount)* -110°F/750°F (Remote Mount or Cooling Tower)* *Exact limits depend on diaphragm seal and fill fluids.
<b>Wetted Materials</b>	Tube: 316SS Seamless Socket: 316SS
<b>Lens</b>	Tempered Safety Glass (Standard), Plastic or Laminated Safety Glass
<b>Other Materials</b>	Case: Reinforced Thermoplastic (Phenolic) or 316SS Ring: Phenolic Turret Twist-Off or SS Twist-Off Bayonet Dial: White Aluminum, Black Letters, Case-to-Socket: O-Ring
<b>Fillable</b>	Yes
<b>Restrictor Screw</b>	Yes, removable.
<b>Maximum Working Pressure</b>	Stable = 100% Momentary = 130% of scale
<b>Environmental Protection</b>	NEMA 4X/IP65
<b>Weight</b>	Phenolic (Dry) = 2.5 lbs Phenolic (Filled) = 3.5 lbs SS (Dry) = 2 lbs SS (Filled) = 3 lbs

## 4.5" INDUSTRIAL PROCESS GAUGE

PRESSURE GAUGES



Visit [reotemp.com](http://reotemp.com)

- ✓ Check Stock
- ✓ Get Price
- ✓ Configure Part #
- ✓ Download PDF Data Sheets

**HOW TO ORDER:** Choose options to build a part number. For example: **PT45P1A2P21-D-T-HV**

PT45	P	1	A	2	P21	-D	-T	-HV
DIAL SIZE	CASE TYPE	TUBE & SOCKET	MOUNT TYPE	CONNECTION	RANGE CODE	CASE FILL	LENS	OPTIONS
PT45 = 4.5"	P = Fiberglass Reinforced Thermo-plastic T = 316SS, Bayonet Ring	1 = 316SS *3 = Monel	A =  Bottom C =  Lower Back E =  Lower Back / Front Flange (316SS case Only)	2 = 1/2" NPT 4 = 1/4" NPT 5 = 1/4" Female High Pressure (9/16" - 18 UNF) 3 = 3/4" NPT	<b>Common Ranges</b> P01 = -30 inHg-0 psi P03 = -30 inHg-0-30 psi P16 = 0-30 psi P18 = 0-100 psi P20 = 0-200 psi P21 = 0-300 psi P25 = 0-1,000 psi P34 = 0-5,000 psi  <b>Available Ranges</b> ■ Vac to 20,000 psi ■ Gauge Pressure, Vacuum, or Compound ■ Lowest Range = 10 psi  <b>Available Units</b> ■ psi     ■ bar ■ kPa     ■ kg/cm <sup>2</sup> ■ ftH <sub>2</sub> O   ■ & more  <i>For Additional Range Codes See Page 45</i>	-D = Dry -G = Glycerin -T = Dry, Teflon Coated Movement -W = Glycerin/Water (65/35) -S = Silicone -I = Inert	-T = Tempered Safety Glass (std) -P = Plastic -S = Laminated Safety Glass	-HV = Hi-Vis™ Dial Calibration Certificate -C3 = 3 pt. O <sub>2</sub> Service -TS = Stainless Steel Tag -MP = Max. Pointer -EC = Electrical Contacts** -P6 = Pointer Stop at 6 O'clock -FM = Flush Mount Ring for Phenolic Case -NC = NACE Compliance Certificate -PM = Positive Material Identification Certification

\*Non-standard Configuration  
\*\*Phenolic Case Only

### Diaphragm Seal Suitability Guide

For applications where a diaphragm seal is required, the following diaphragm seal model types are most commonly assembled and filled to Series PT45 pressure gauges. This matrix identifies which diaphragm seal is appropriate based on the specified pressure range. Please reference the diaphragm seal data sheet and seal fill fluid guide for additional application considerations including max pressure, temperature limits, and material compatibility.

Diaphragm Seal Model	Total Gauge Span* (in psi)							
	15	30	45	60	75	100	160+	
Mini Seals	MS6	X	S	T	T	T		
	MS8	S	T	T				
Threaded Flush	1"	X	X	X	S	S	T	
	1.5"	S	S	T	T			
Offline	W5	S	T	T				
	W6	T						
	T5	S	T					
	W7/V5							

\*Total gauge span is additive of negative and positive pressures.

Example: -15 - 0 - 30 psi = 45 psi span

PT45P1A2L21-D-T  
W51522SSS-TTDTD-AS

- Assembly will function correctly with minimal accuracy degradation.
- T Assembly will function correctly given stable temperature.
- S Assembly is highly sensitive to orientation and temperature variance. REOTEMP cannot guarantee a stated accuracy.
- X Assembly will not work. The diaphragm does not displace enough fill fluid to drive the pressure gauge.

