

## DIAL INDICATING THERMOMETER OPTIONS

Part #	Description	Industrial AA, RR, CC, CN, BB, SS, XR, XX, YY, YN, VR, VV, LL, MM, JJ	Small Dial OEM QQ, GG, HH	Digital DT, DTR, BT	Dual Mode Thermometer DMT
<b>CASE FILL OPTIONS</b>					
-SF	Silicone Filled Case	✓	N/A	N/A	✓
<b>LENS OPTIONS</b>					
-PC	Acrylic Window	✓	✓	N/A	✓
-PY	Polycarbonate Window	✓	✓	STD	✓
-TG	Tempered Safety Glass Lens	✓	N/A	N/A	✓
-SG	Laminated Safety Glass Lens	✓	N/A	N/A	✓
-GL	Plain Glass	STD	STD	✓	STD
<b>STEM OPTIONS</b>					
-PS	Pointed Tip	✓	✓	✓	N/A
-SS	316 Stainless Steel Stem	✓	✓	✓	✓
-F5	5/16" Diameter Stem (Not Available with 316SS Stem)	✓	✓	✓	N/A
-S3	3/8" Diameter Stem	✓	✓	✓	✓
-TF	Teflon Coating (Stem Only)	✓	✓	✓	✓
<b>DIAL OPTIONS</b>					
-CL	Custom Logo Dial	✓	✓	✓	✓
-HV	Hi-Vis Dial	✓	MQ	N/A	✓
-CB	Color Band	✓	MQ	N/A	✓
-CP	Color Pie	✓	MQ	N/A	✓
-WD	White Dial (Standard Ranges Only)	✓	✓	✓	✓
-MM	Min/Max Pointer	✓	N/A	N/A	✓
NL	No Logo	✓	✓	✓	✓
<b>TAG OPTION</b>					
-TS	Stainless Steel Tag (1-10 Characters)	✓	✓	✓	✓
-TP	Paper Tag	✓	✓	✓	✓
<b>CERTIFICATION OPTIONS</b>					
-R1	1pt. Calibration Certification (REOTEMP Chooses the Point)	✓	✓	✓	✓
-R3	3 pt. Calibration Certification (REOTEMP Chooses the Points)	✓	✓	✓	✓
-C1	1 pt. Calibration Certification (Customer Chooses the Point)	✓	✓	✓	✓
-C3	3 pt. Calibration Certification (Customer Chooses the Points)	✓	✓	✓	✓
-CS	NIST Calibration Sticker (No Logged Points)	✓	✓	✓	✓
-CC	Certificate of Conformance	✓	✓	✓	✓
<b>OTHER</b>					
-3H	316 Stainless Steel Head & Bezel	✓	N/A	STD	✓
-HT	Heat Transfer Compound	✓	✓	✓	✓
-CH	Spring Handle (T-27)	✓	✓	✓	N/A
-AS	Allows Bimetal to Fit 1-1/4-18 Industrial Thermowell	✓	✓	✓	✓

**THERMOMETERS**

✓	Indicates that the option is available with the model.	N/A	Indicates the option is not available with this model.
STD	Indicates standard options with no additional cost.	MQ	Minimum order quantity applies.

## BIMETAL OPTIONS

**You Tube** Visit [reotemp.com/youtube](http://reotemp.com/youtube)

- ✓ In-depth Videos on our Customization Options
- ✓ Product Demonstration Videos



REOTEMP's Hi-Vis™ dial increases the visibility of dials in low-light environments and from a distance. Hi-Vis™ dials are often used in areas where readings are paramount to safety. They can also be used to differentiate between two different process lines within a facility.

- HV** Hi-Vis™ High Visibility Dial
- Availability** Process Grade Thermometers



Hi-Vis™

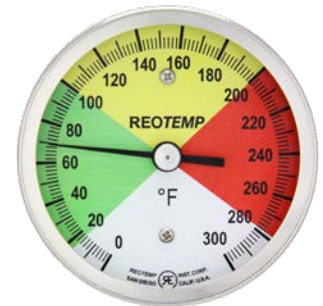
### COLOR BANDS & COLOR PIES

Color bands and pies highlight a specific range on the gauge so that it is immediately apparent if the process falls within a critical temperature range.

- CB** Color Band (Specify Colors and Ranges)
- CP** Color Pie (Specify Colors and Ranges)
- Availability** Process Grade Thermometers



Color Band



Color Pie

### CUSTOM LOGO DIAL

Thermometer dials offer a unique opportunity to communicate critical information, highlight installation specifications, or promote an OEM or end-user brand.

- CL** Custom Logo Dial
- Availability** All Dial Indicating Thermometers.



Custom Logo

### DIAL MARKING

Add text, a serial number, tag number, equipment class, or other text to the thermometer dial face.

- DM** Dial Marking
- Availability** All Dial Indicating Thermometers.



Min-Max Pointer with Color Bands

THERMOMETERS