

WPT Weld Pad Thermocouple Model Code

WPT - T1 - T2 - T3 - T4 - T5 - T6 - T7 - T8 - T9 - T10

WPT Weld Pad Temperature Sensor

T1 Connection Head

2AL	Aluminum, 3/4" conduit, Bakelite terminal block
2ALT	Aluminum epoxy, 3/4" conduit, Bakelite terminal block
2SS	Stainless steel, 3/4" conduit, Bakelite terminal block
Other	Refer to page 5 for details, styles and options
X	Not required

T2 Sensor "A" Length (inches)²

"inches"	Specify length in inches
----------	--------------------------

T3 Sensor Extension Style

CF	Compression Fitting
GS	Gas Seal Union
AF	Flex armour over fiberglass (482°C)
TE	Teflon (260°C)
ST	Teflon with SS over braid (260°C)
AT	Flex armour over Teflon (260°C)
SP	Special (specify)

T4 Process Fitting

12	1/2" NPT
34	3/4" NPT
10	1" NPT
X	Not applicable
Other	Consult factory

T5 Sensor Type

K	Type K Thermocouple (grounded junction)
Other	Consult factory

T5 Sensor Sheath & BTB Block Material

316	316/316L stainless steel
310	310 stainless steel
600	Inconel 600
Other	Consult factory

T7 Probe Diameter

14	1/4"
38	3/8"

T8 Sensor "L" Length (inches)²

"inches"	Specify length in inches
----------	--------------------------

T9 Surface Pad Curve - Surface Diameter (inches)

X	Not applicable - flat surface pad
"inches"	Surface (pipe) diameter specified in inches

T10 Surface Pad Orientation to Pipe

L	Longitudinal along pipe
R	Right Angle to pipe

MI Cable Clamp
Supplied in the same material as WPT sensor

NOTES:

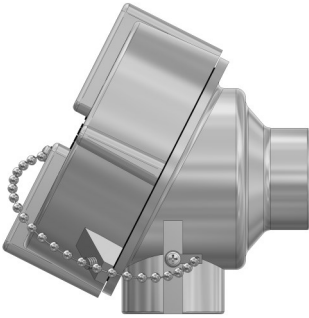
1. Part number example: WPT-X-36-TE-X-K-316-14-120-4-L or WPT-2SS-GS-3.5-12-K-600-14-180-6-R
2. Reference page 2 for part outline and page 3 for dimensions
3. WPT's are supplied with MTR's
4. Bold text indicates most common part selections



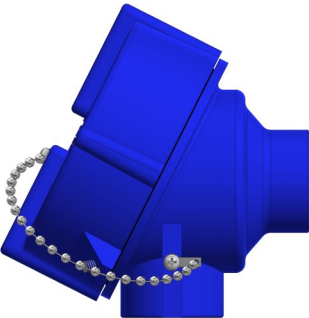
WPT Weld Pad Thermocouple Outline

Connection Head

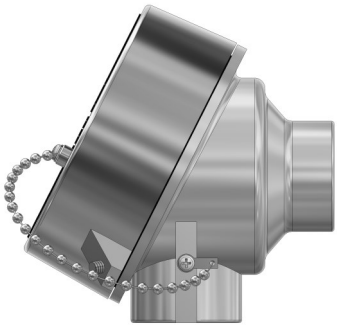
2AL



2ALT



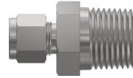
2SS



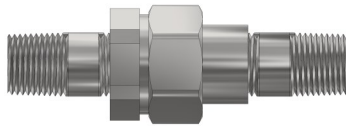
Refer to page 4 for further connection head styles, options and details

Extension

CF



GS



TE



ST



AT

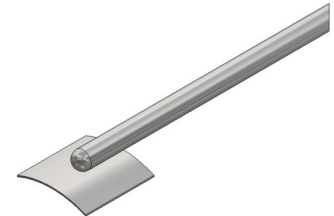


Sensor

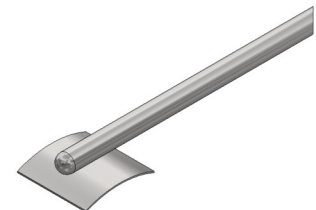
MI Cable Clamp



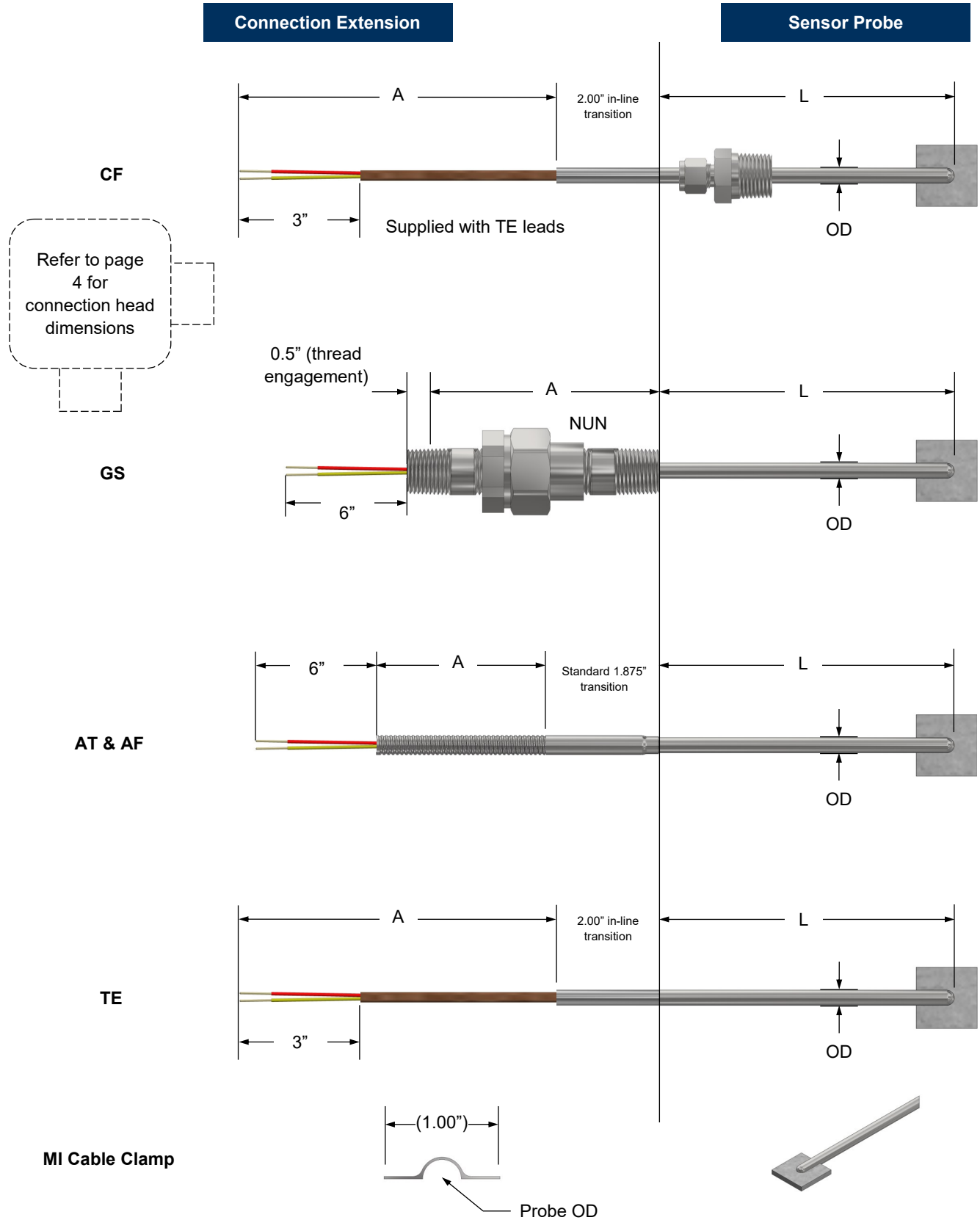
Longitudinal



Right Angle

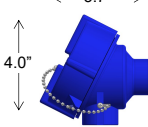
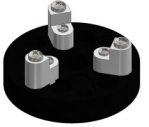
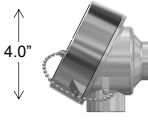
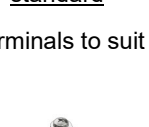
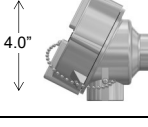

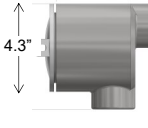
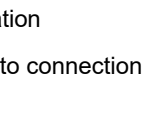
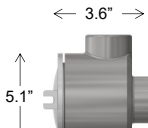
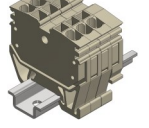

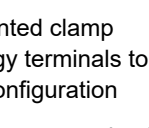
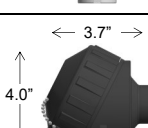
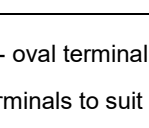
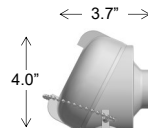


WPT Weld Pad Thermocouple Dimensions



WPT Connection Heads

Model, Outline, and Dimensions

Outline & Dimensions	Model	Connection (NPT)		Terminal Block Options	Material	Connection Head Electrical Approval ¹
		Instrument	Conduit			
 <p>← 3.7" → 4.0"</p>	1ALT	1/2"	1x 1/2" ²	 Bakelite - <u>standard</u> Screw terminals to suit sensor	Cast aluminum epoxy coated Buna O-ring	Class I Groups B,C,D Class II Groups E,F,G Class III Enclosure Type 4X
	2ALT	1/2"	1x 3/4"			
	3ALT	3/4"	1x 3/4"			
 <p>← 3.7" → 4.0"</p>	1SS	1/2"	1x 1/2" ²	 Ceramic - optional Screw terminals to suit sensor configuration Add: "C" to connection head	316 stainless steel Buna O-ring	Class I Groups B,C,D Class II Groups E,F,G Class III Enclosure Type 4
	2SS	1/2"	1x 3/4"			
	3SS	3/4"	1x 3/4"			
 <p>← 3.7" → 4.0"</p>	1AL	1/2"	1x 1/2" ²	 Ceramic - optional Screw terminals to suit sensor configuration Add: "C" to connection head	Cast aluminum Buna O-ring	Class I Groups B,C,D Class II Groups E,F,G Class III Enclosure Type 4
	2AL	1/2"	1x 3/4"			
	3AL	3/4"	1x 3/4"			
 <p>← 3.6" → 4.3"</p>	1CAL ³	1/2" ²	1x 1/2" ²	 Clamp technology - optional DIN mounted clamp technology terminals to suit sensor configuration Add: "D" to connection head	Iron alloy Buna O-ring	Class I Groups A,B,C,D Class II Groups E,F,G Class III
	2CAL ³	3/4"	1x 3/4"			
	1CCI ³	1/2" ²	1x 1/2" ²			
	2CCI ³	3/4"	1x 3/4"			
 <p>← 3.6" → 5.1"</p>	4CAL ³	1/2"	2x 1/2"	 Clamp technology - optional DIN mounted clamp technology terminals to suit sensor configuration Add: "D" to connection head	Cast aluminum Buna O-ring	Class I Groups B,C,D Class II Groups E,F,G Class III; Enclosure
	3CAL ³	3/4"	2x 3/4"			
	4CCI ³	1/2" ²	2x 1/2" ²			
	3CCI ³	3/4"	2x 3/4"			
 <p>← 3.7" → 4.0"</p>	4AL	1/2"	1x 1/2" ²	 Ceramic - oval terminal block Screw terminals to suit sensor	Cast aluminum Buna O-ring	General purpose
	0AL	1/2"	1x 3/4"			
 <p>← 3.7" → 4.0"</p>	1CI	1/2"	1x 1/2" ²	 Ceramic - oval terminal block Screw terminals to suit sensor	Iron alloy Buna O-ring	General purpose
	2CI	1/2"	1x 3/4"			
	3CI	3/4"	1x 3/4"			
 <p>← 3.7" → 4.0"</p>	0PY	1/2"	1x 3/4"	Terminal block integral to connection head Screw terminals to suit sensor	Polypropylene	

NOTES:

1. Connection head approval rating is that of the enclosure ONLY and not the WPT sensor assembly
2. May be supplied with an approved reducer bushing